



COLORADO STATE UNIVERSITY  
EXTENSION

# FREE Summit County CHIPPING PROGRAM

## Protect Your Home From Wildfire

### SUCCESS IN WILDFIRE MITIGATION

Summit County is recognized across the West as a leader in community wildfire protection. Local voters have approved mill levies that fund a variety of wildfire mitigation programs, including the Summit County Chipping Program, which launched in 2014.

Through the Chipping Program, thousands of Summit County residents and property owners have taken concrete steps to protect their homes from wildfire. Here are some highlights of our community's success:

MORE THAN

**20,000** pickups

FROM OVER **8,000** PARTICIPATING HOUSEHOLDS



AND MORE THAN

**55,000** cubic yards

WOODY MATERIALS COLLECTED



Summit County is helping residents and property owners **create defensible space** by providing free chipping and disposal for conifer and aspen branches, logs and small trees. If you clear this woody vegetation from around your home and stack it in a pile, we'll chip it and haul it away for free.

### MATERIALS GUIDELINES

**Accepted materials include trees, logs and branches up to 12 inches in diameter, free of nails and wire.**

The following restrictions apply:

- No willows: Willows have high moisture content, so they help to slow the spread of fire. They also clog our chipping equipment because they are very fibrous.
- No construction or building materials, treated lumber, fence posts or signs.
- No rotten wood, root wads, stumps, dirt, rocks, or shrubs: These items clog and damage our chipping equipment.
- No grass clippings, trash, weeds or bags of leaves.

### PILE GUIDELINES

**Piles must be stacked by 8 a.m. on the Monday of your neighborhood's designated chipping week** (see reverse for schedule), so that our chipping crews can record all pile locations and plan their routes for that week. Chipping and collection will take place throughout your designated week.

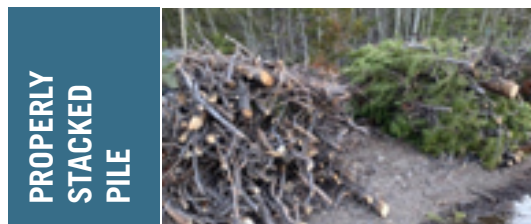
- Stack piles neatly (no bags); place trunks and branches perpendicular to the road, large ends facing the road, small ends facing your property.
- Place piles within 5 feet of the roadway, but not touching the road or in drainage ditches.
- Viewed from the road, maximum pile size is 5 feet high, 5 feet wide; maximum length of individual trunks and branches is 10 feet.
- Maximum number of piles for each property is 10 piles.
- Do not combine piles with neighbors or place piles in other neighborhoods.
- After crews have removed your pile, clear away any remaining branches, needles and debris.

### DEFENSIBLE SPACE

Defensible space is an area around a home where trees and other flammable vegetation are cleared or thinned to slow the spread of wildfire toward the building. Defensible space creates a safe zone for firefighters to carry out their work, and it reduces the chance that a structure fire will move to the surrounding forest. Every home in Summit County should have defensible space.

**To schedule a free defensible-space assessment of your property, contact:**

- Summit Fire & EMS  
wildland@summitfire.org
- Red, White & Blue Fire  
mitigation@rwbfire.org



PROPERLY STACKED PILE



IMPROPERLY STACKED PILE



**FREE** Summit County

# CHIPPING PROGRAM

Protect Your Home From Wildfire

**CHIPPING PROGRAM**

Map and Schedule

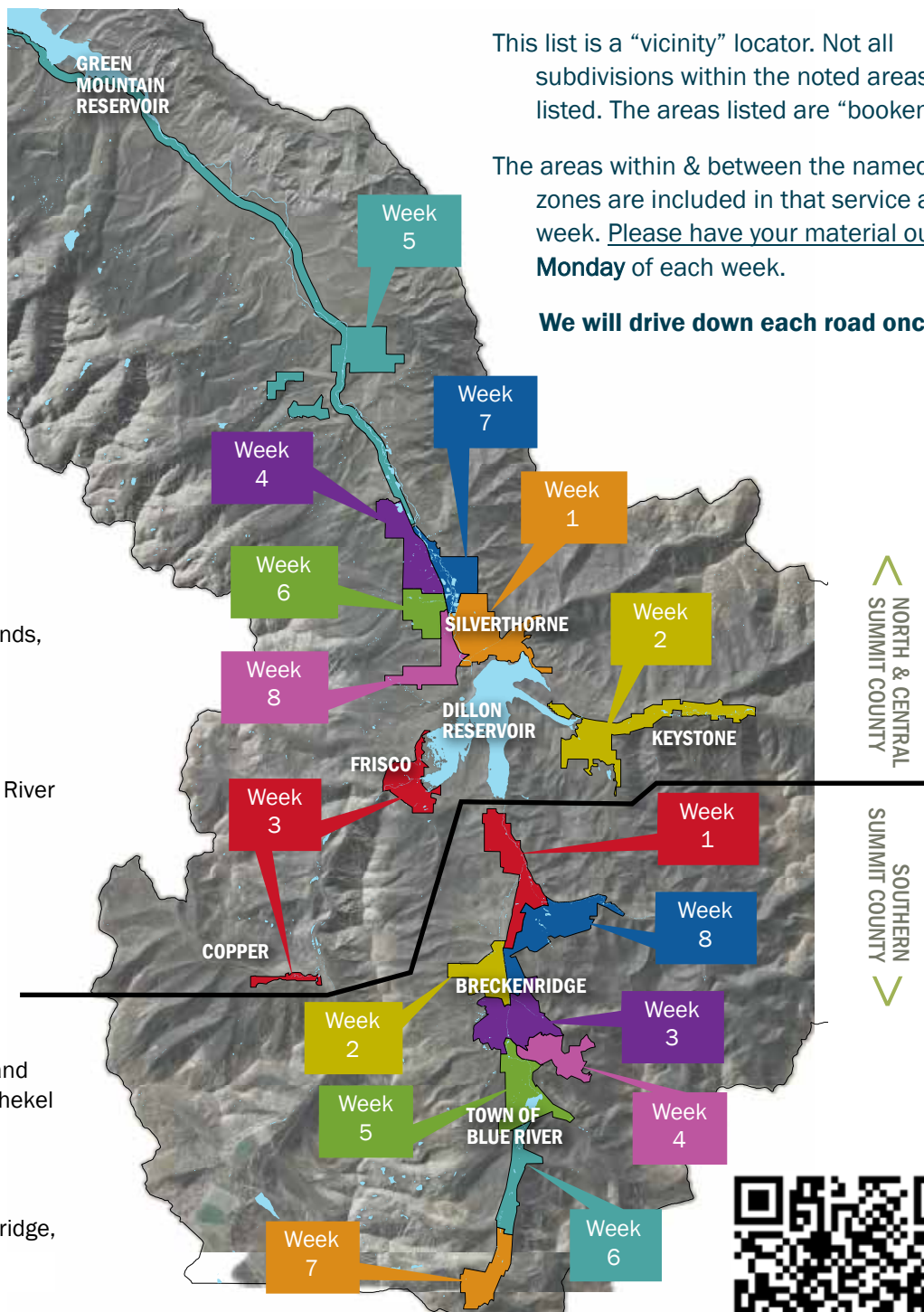
## 2026 CHIPPING PROGRAM DATES AND SERVICE AREA LOCATIONS

### NORTH AND CENTRAL SUMMIT COUNTY

- Week 1** June 1-5  
Silverthorne (east of Hwy. 9), Ptarmigan, Dillon Valley,
- Week 2** June 8-12  
Summerwood, Summit Cove, Keystone, Montezuma Town of Dillon, Corinthian Hill
- Week 3** June 15-19  
Frisco, Copper Mountain
- Week 4** June 22-26  
Summit Sky Ranch, Eagles Nest, Three Peaks
- Week 5** June 29-July 2  
All-properties-north of Summit Sky Ranch
- Week 6** July 6-10  
Willowbrook, Willow Creek Highlands, Ruby Ranch
- Week 7** July 13-17  
Sage Creek Canyon, South Forty, Hamilton Creek, Angler Mountain Ranch, Ponds at Blue River, Blue River Run
- Week 8** July 20-24  
Silverthorne (west of Hwy. 9), Mesa Cortina, Wildernest

### SOUTHERN SUMMIT COUNTY

- Week 1** June 1-5  
Farmer's Korner, Gold Hill, Highland Meadows, Tenmile Vista, Silver Shekel
- Week 2** June 8-12  
Airport Road, Peak 7
- Week 3** June 16-20  
Peak 8, Peak 9, Town of Breckenridge, Western Sky Ranch, Moonstone
- Week 4** June 22-26  
Boreas, Baldy
- Week 5** June 29-July 2  
Warrior's Mark, Spruce Valley Road (The Crown), Spruce Valley Ranch
- Week 6** July 6-10  
Town of Blue River vicinity
- Week 7** July 13-17  
Tordal Estates to Quandary
- Week 8** July 20-24  
Highlands, Summit Estates, Gilrose, Swan River Valley



This list is a "vicinity" locator. Not all subdivisions within the noted areas are listed. The areas listed are "bookends".

The areas within & between the named zones are included in that service area week. Please have your material out Monday of each week.

**We will drive down each road once.**



Scan the QR Code for complete program details.

Summit County is helping residents and property owners **create defensible space** by providing free chipping and disposal for **conifer and aspen** branches, logs and small trees. If you clear this material from around your home and stack it in a uniform pile, we'll chip it and haul it away for **FREE**.